

1 **Supplement to: Impact of parameterized convection on the storm track and**
2 **jet stream response to global warming: implications for mechanisms of the**
3 **future poleward shift**

4 Chaim I. Garfinkel*

5 *The Hebrew University of Jerusalem, Institute of Earth Sciences, Edmond J. Safra Campus, Givat*
6 *Ram, Jerusalem, Israel*

7 Benny Keller

8 *The Hebrew University of Jerusalem, Institute of Earth Sciences, Edmond J. Safra Campus, Givat*
9 *Ram, Jerusalem, Israel*

10 Orli Lachmy

11 *Department of Natural Sciences, The Open University of Israel, Ra'anana, Israel*

12 Ian White

13 *The Hebrew University of Jerusalem, Institute of Earth Sciences, Edmond J. Safra Campus, Givat*
14 *Ram, Jerusalem, Israel and Department of Natural Sciences, The Open University of Israel,*
15 *Ra'anana, Israel*

16 Edwin P Gerber

17 *Courant Institute of Mathematical Sciences, New York University, New York, USA*

18

Martin Jucker

19

Climate Change Research Centre and ARC Centre of Excellence for Climate Extremes,

20

University of New South Wales, Sydney, Australia

21

Ori Adam

22

The Hebrew University of Jerusalem, Institute of Earth Sciences, Edmond J. Safra Campus, Givat

23

Ram, Jerusalem, Israel

24

**Corresponding author address: Chaim I. Garfinkel, The Hebrew University of Jerusalem, Institute*

25

of Earth Sciences, Edmond J. Safra Campus, Givat Ram, Jerusalem, Israel.

26

E-mail: chaim.garfinkel@mail.huji.ac.il

ABSTRACT

²⁷ The supplemental material includes figures similar to those in the main
²⁸ paper, but with results from all ten configurations and not just the JG17 and
²⁹ TLS19 configurations.

³⁰ *Acknowledgments.* CIG and BK acknowledge the support of the Israel Science Foundation (grant
³¹ agreement 1727/21). CIG and EPG are supported by the US-Israel Binational Science Foundation
³² (BSF) grant 2020316. EPG acknowledges support from the US NSF through grant OAC-2004572.
³³ MJ acknowledges support from the Australian Research Council (ARC) Centre of Excellence for
³⁴ Climate Extremes (CE170100023).

35 **LIST OF FIGURES**

36 **Fig. 1.** As in Figure 2 of the main body but for all ten configurations. 6

37 **Fig. 2.** As in Figure 3 of the main body but for all ten configurations. 7

38 **Fig. 3.** As in Figure 9 of the main body but for all ten configurations. 8

39 **Fig. 4.** As in Figure 10 of the main body but showing all terms individually. Note that the vertical
40 eddy heat flux convergence term ($\Delta\overline{\omega'T'}$) is of similar magnitude to the meridional eddy
41 heat flux term ($\Delta\overline{v'T'}$) 9

42 **Fig. 5.** As in Figure 11 of the main body but for all ten configurations 10

43 **Fig. 6.** As in Figure 5 of the main body but for all ten configurations. 11

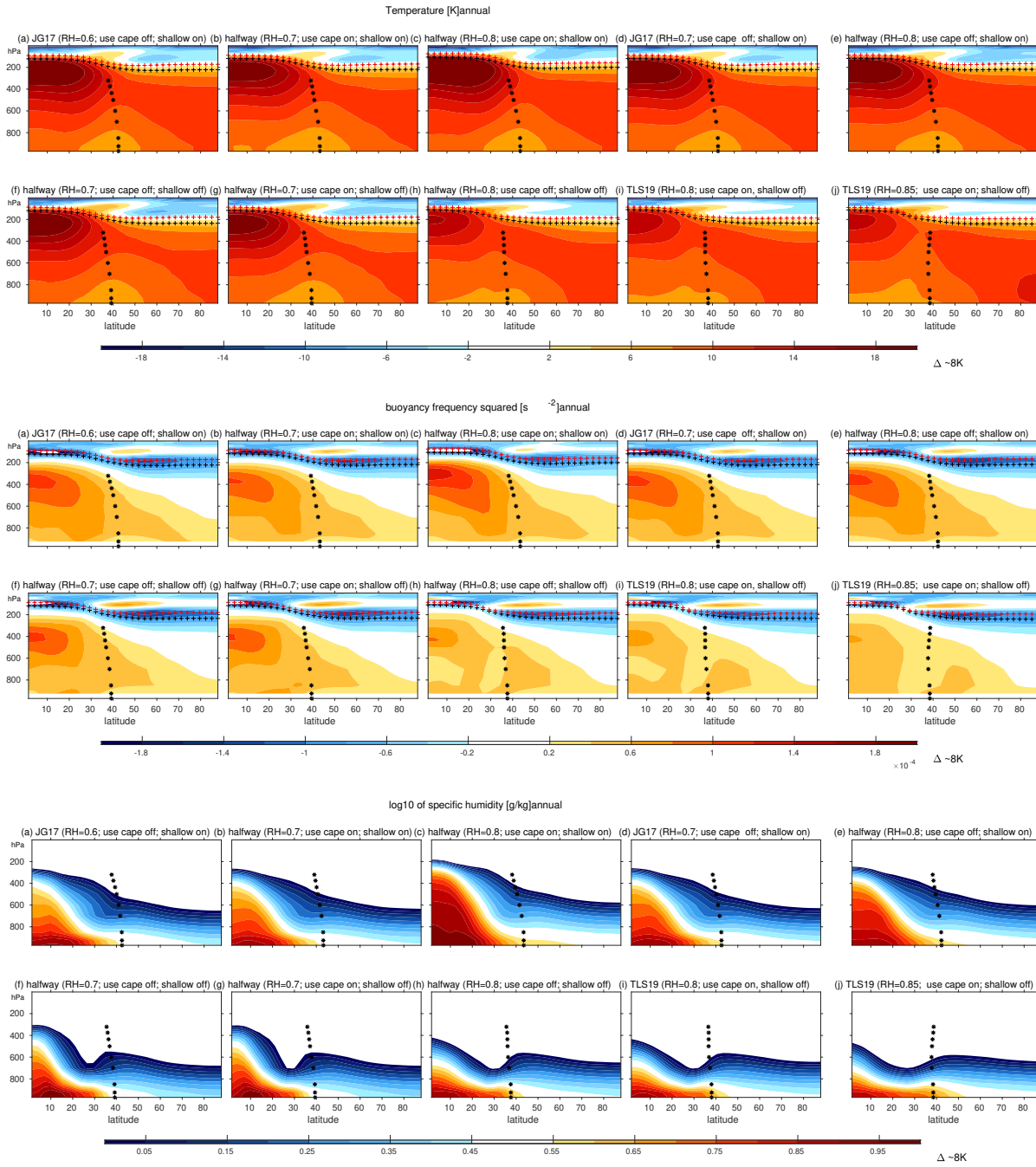


FIG. 1. As in Figure 2 of the main body but for all ten configurations.

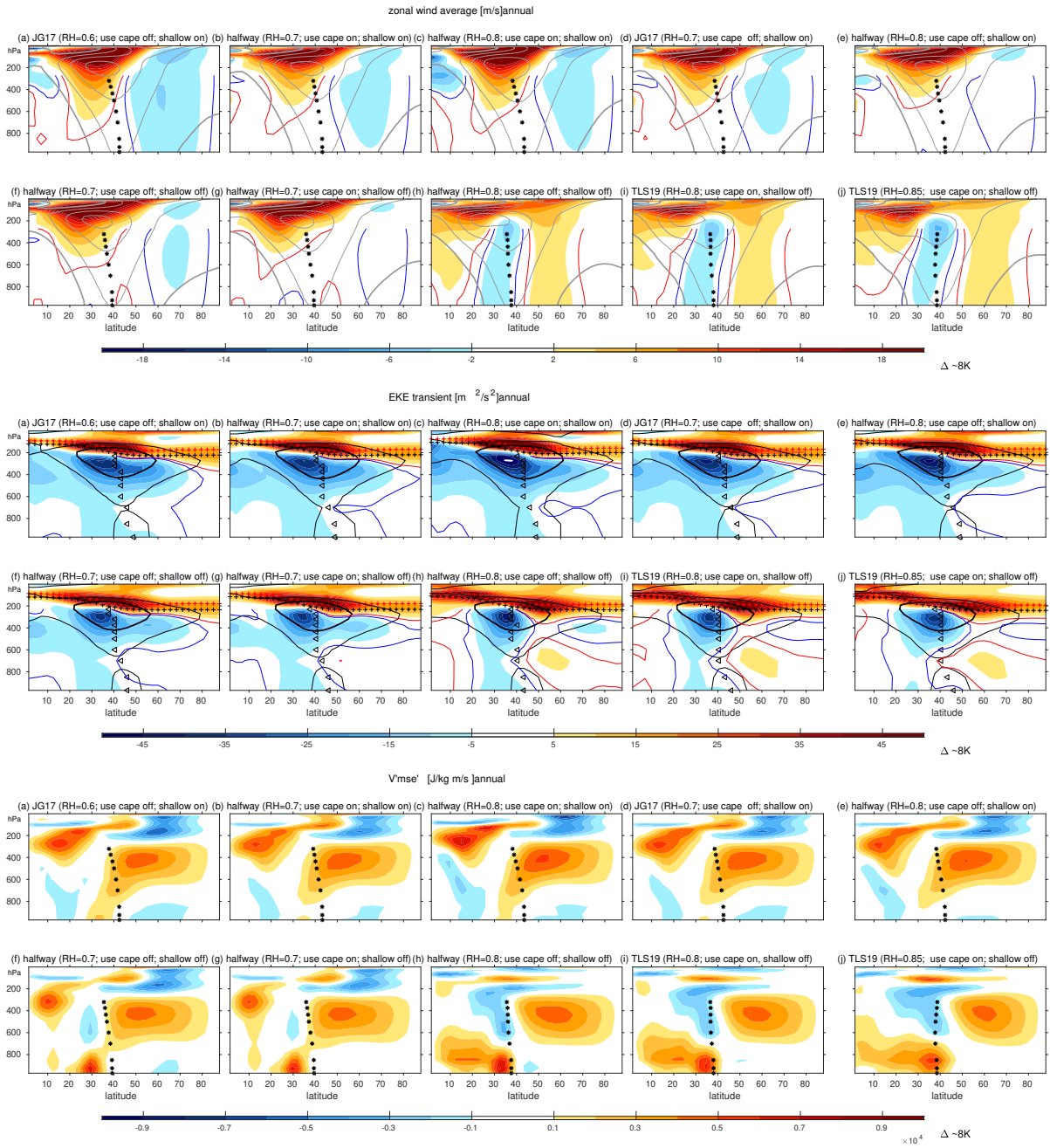


FIG. 2. As in Figure 3 of the main body but for all ten configurations.

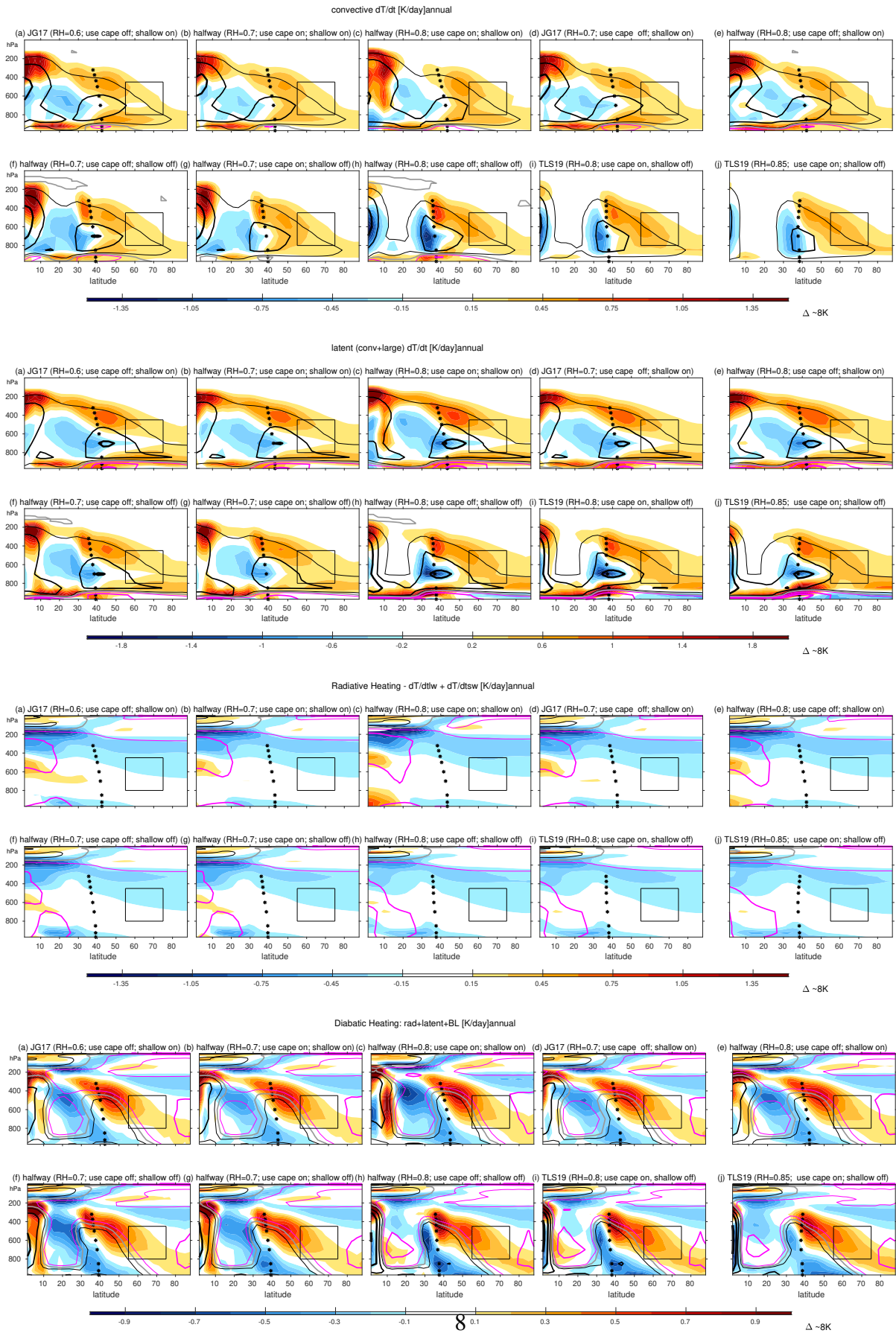
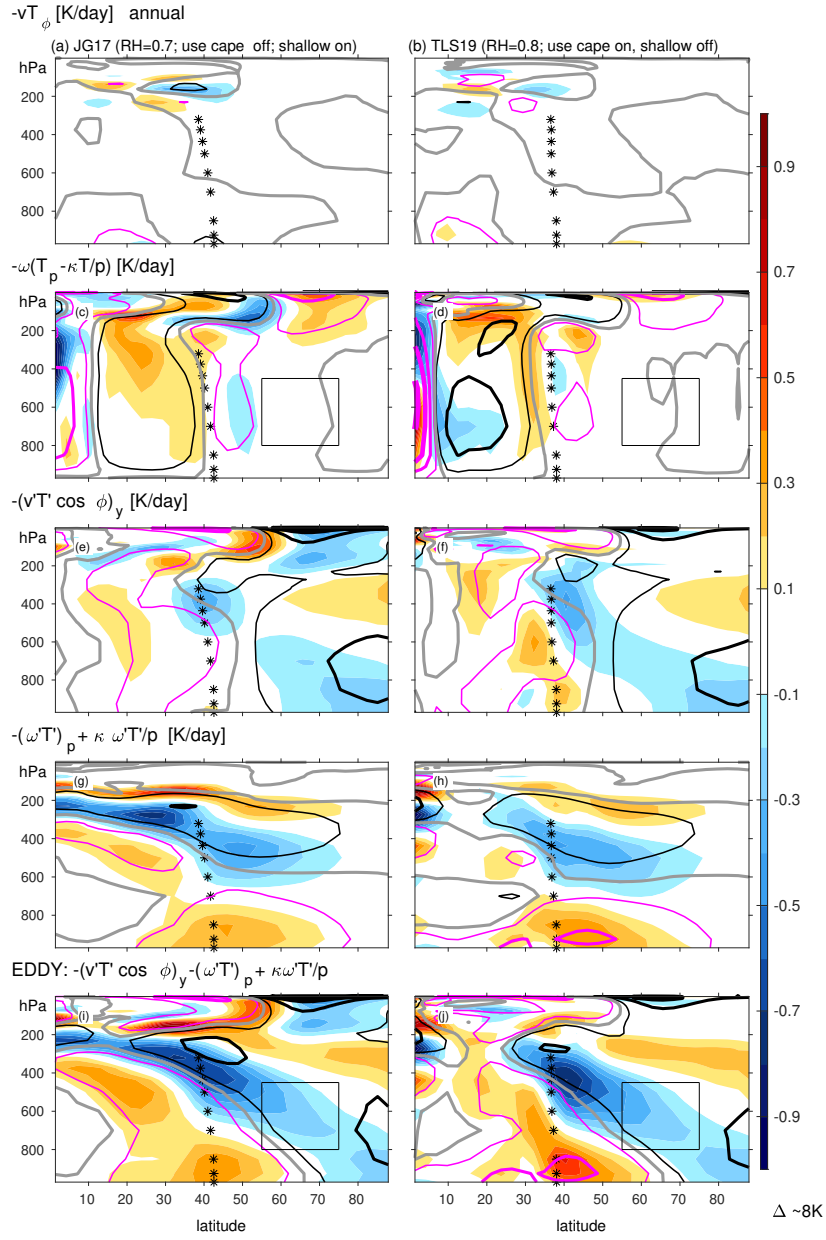


FIG. 3. As in Figure 9 of the main body but for all ten configurations.



44 FIG. 4. As in Figure 10 of the main body but showing all terms individually. Note that the vertical eddy heat
 45 flux convergence term ($\overline{\Delta\omega'T'}$) is of similar magnitude to the meridional eddy heat flux term ($\overline{\Delta v'T'}$)

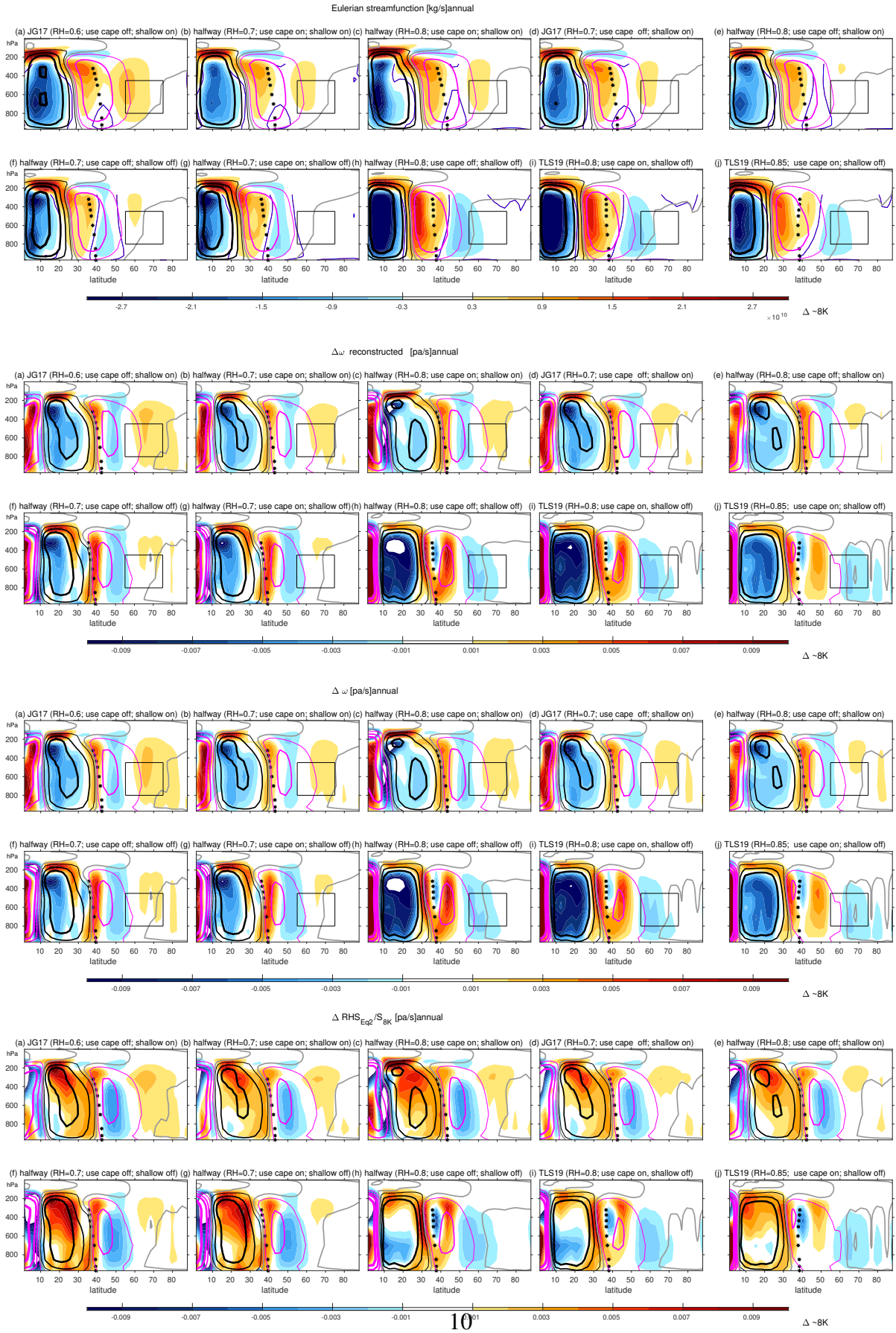


FIG. 5. As in Figure 11 of the main body but for all ten configurations

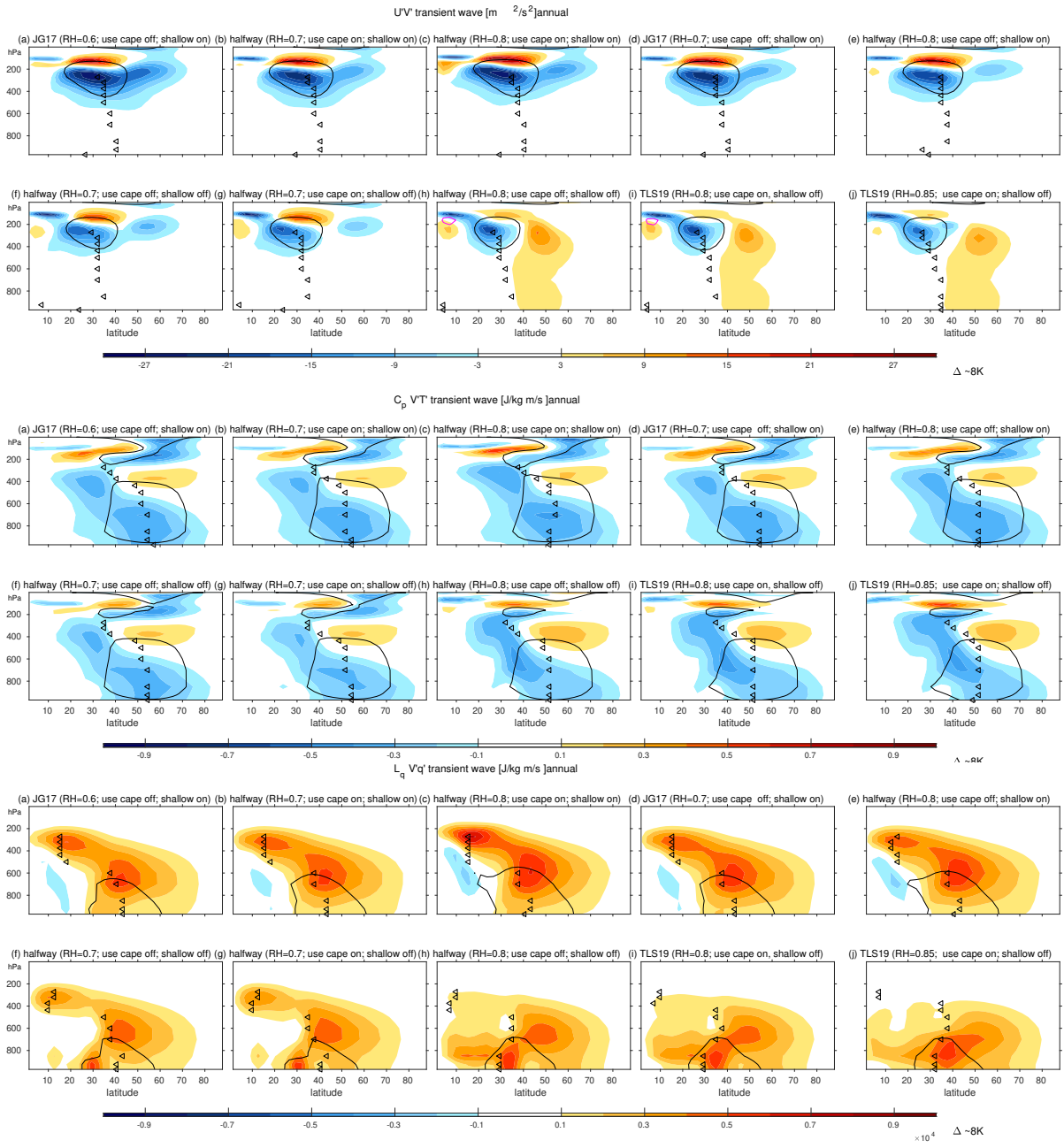


FIG. 6. As in Figure 5 of the main body but for all ten configurations.